

# Patio Safety Prevention



## Patio Related Incidents

Patios provide a nice outdoor alternative for customers to sit and enjoy their meal or dessert. You want customers to have a positive experience so they want to come back and will also spread the word. Unfortunately, incidents occur that can cause minor to significant injury and property damage. The most common types of patio incidents involve:

- + Falls from slips and trips.
- + Injuries from patio tables:
  - + Tipping by not being properly anchored to foundation.
  - + Seats or parts of table breaking due to corrosion of metal parts.
  - + Sharp edges of tables that have been damaged.
- + Serious injuries to bystanders and property damage to vehicles due to umbrellas that are not properly secured being blown from tables.

## What can you do to improve the safety of your patios?

Improving the safety of your patios and premises all together can be achieved through performing a visual inspection of the patio and all areas of the property at the start of the day. Train employees to pay attention to hazards that could injure someone or cause property damage. Listed below are a few items to improve safety and avoid the most common incidents that occur on or around patios:

### Slip, Trips & Falls

1. Paint the edge of your sidewalks and ramps to make the elevation change more visible. Use a slip resistant commercial grade striping paint.
2. Repair holes or depressions in walking areas that may cause tripping.
3. Pavement can shift in ways that may create elevation changes and a tripping hazard. Minor elevation changes can be ground down to a beveled edge or filled in to reduce or eliminate the elevation change. Major elevation changes may need to be cut out and replaced with new pavement.
4. Clean snow off patios.
5. Apply ice melt on snow and icy areas where customers and employees may walk.
6. Clean up spills.
7. Identify and remove any item that could be a tripping hazard.
8. Maintain good lighting and promptly replace any lights that are burned out.



Pavement: Shift  
in Pavement



Pavement:  
Elevation Change  
Repaired



Pavement: ground  
to remove higher  
edge to remove  
trip hazard.



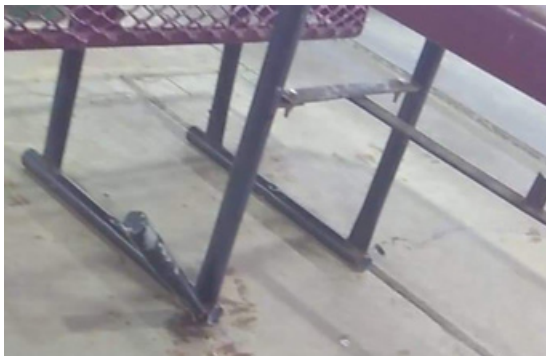
## Patio Tables

1. Ensure tables are properly secured to the foundation as required by the table manufacturer. Check with manufacturer for specific anchoring recommendations.
2. Check tables for condition and identify if any have corrosion or loose parts that could affect the safety of their use.

**Patio Table Incident #1:** While the customer was sitting down on a bench on the patio, the table leaned over, smashing the customer's right leg. Two bolts were missing from the bench, which caused the table to lean while the guest was sitting. The customer is experiencing sharp pain to the entire right leg. the customer also sustained inflammation to her leg.



**Patio Table Incident #2:** Tables hollow tubing corroded causing a table to tip over injuring a customer when they sat down.



**Patio Table Incident #3:** Customer sat down on the corner of the table and the unsecured table tipped causing the customer to fall. These photos clearly show the table was unsecured which resulted in a general liability claim with injuries.



## Umbrellas

1. Secure umbrellas to the table or foundation, depending on the design, so they cannot be blown away by wind.
2. Avoid opening umbrellas in windy conditions.
3. It is best to remove umbrellas or close and secure umbrellas from opening in the wind after business hours.
4. Inspect the umbrella post and support system for condition. Replace any malfunctioning or damaged umbrellas or support systems when they show evidence of corrosion or metal fatigue.

**Umbrella Incident #1:** Cracked windshield from umbrella blown from a patio table.



**Umbrella Incident #2:** Typical type of umbrella in table. This table is designed to have a pin installed at the base table to prevent the umbrella from being removed easily or blown out from the wind. The table on the left, however, did not have the security pin installed.

